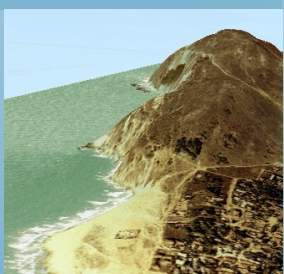
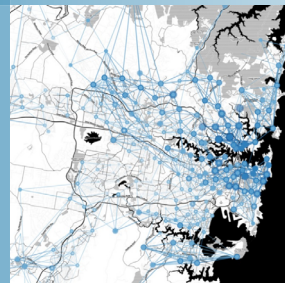
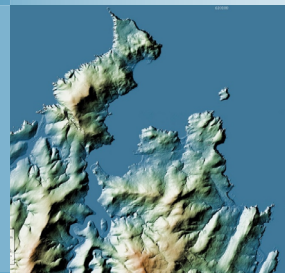
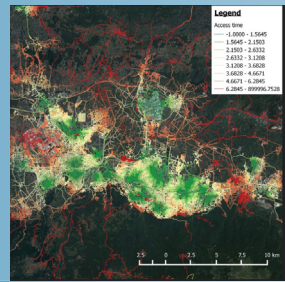
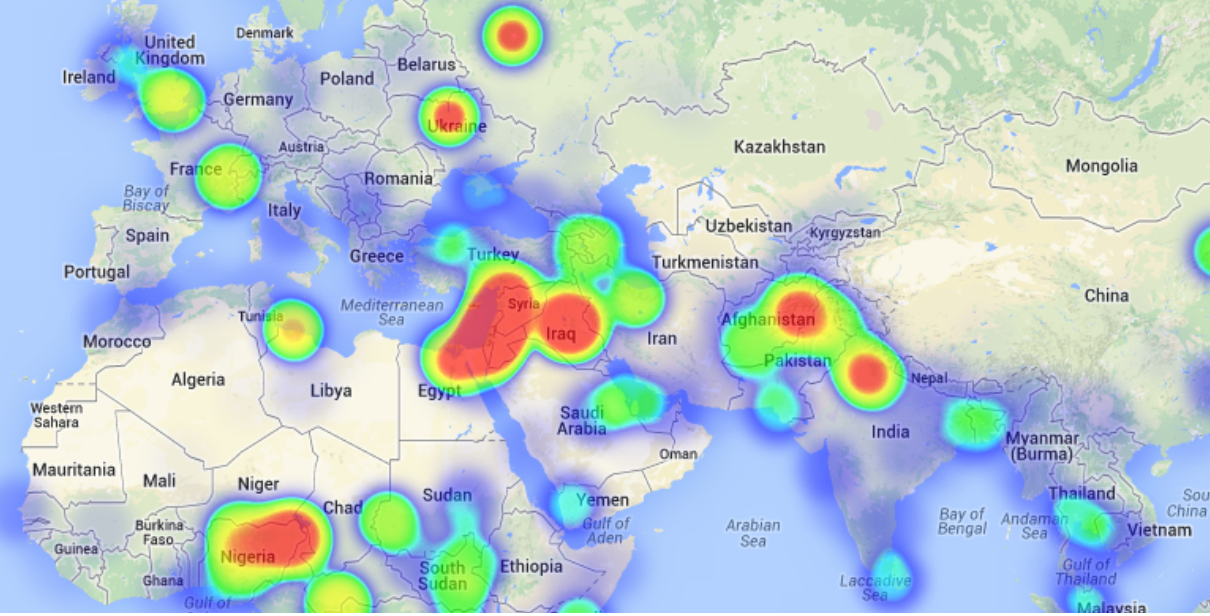
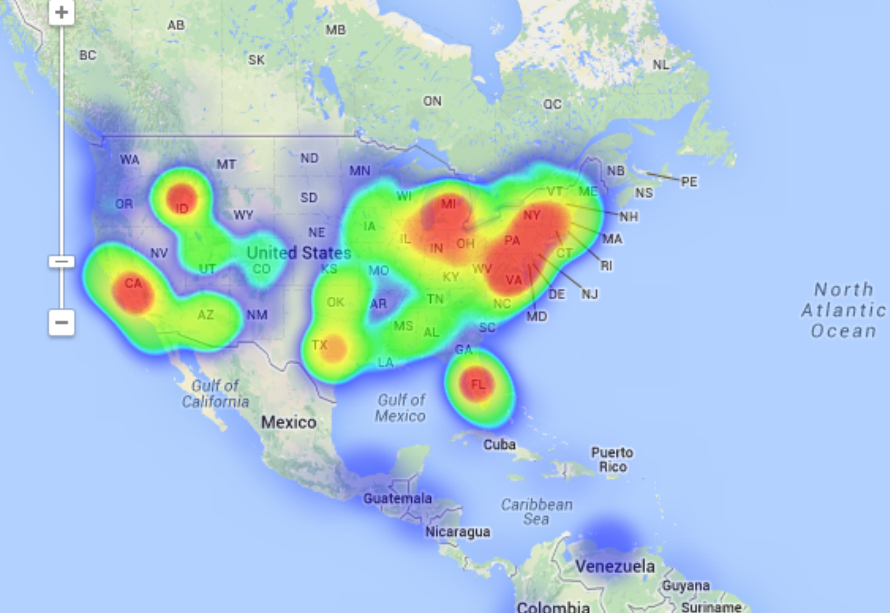


# QGIS AND GRASS GIS COURSE - BEGINNER LEVEL

## ONLINE TRAINING





## COURSE



The course objective is to initiate the student in QGIS, a free and open source desktop geographic information system software, with a complex working environment which allows users to analyze and edit spatial information. QGIS supports multiple types of data (vector and raster formats), web services, providing in the same time, a variety of useful commands and utilities for geo-processing due to its integration with GDAL and OGR libraries. QGIS links also with other open-source GIS packages, including GRASS GIS (Geographic Resources Analysis Support System), extending its capabilities to digital satellite image processing and analysis.

The course is structured in units with different levels of difficulty that comes in help of the student who will learn the general concepts of a Geographical Informational System, working with vectorial, alphanumeric and raster data, handling the geo-processing tools and map creation.



## GOALS



- Highlight the importance and utility of a Geographic Information System (GIS), its integration and applicability in a variety of professional sectors.
- General overview about the basic skills needed in QGIS and GRASS GIS handling and essential concepts used by a GIS system.
- Learn about GIS key tools in an appropriate and professional way, usage of vector and raster data information in order to develop complex spatial analysis.
- Find about all possible difficulties which you may encounter in the execution of GIS projects, and their solutions through practical exercises.
- Gain experience in data preparation, layout development, map creation and high quality products delivery.



## METHODOLOGY

Our online courses, are distributed via Moodle, the world's most popular learning platform. It is a highly flexible Learning Management System that can be used to conduct and access courses, accomplish tasks of practical exercises, interact face-to-face to the teaching staff or benefit of support and resources at any time. The online platform can be accessed 24 hours a day, in which the student will be able to ask for help at any given moment. The instructors will act as supervisors during all the training process, offering support for any possible difficulty encountered by the students along the course.

The course is structured in different modules, making it easy for the student to search for training material, download information, complete practical exercises and take assessments in order to verify their new gained abilities. The instructors will assist the students throughout all the course period, offering progressive help and information according to their evolution.

## INSTRUCTORS



### Alberto Holguín Asensio

holds a Bachelor Degree in Environmental Sciences and has more than 10 years of experience in the field of Remote Sensing and GIS applications regarding natural resources and environmental management. In addition, he also holds teaching skills and extensive experience as a trainer and instructor due to his involvement with Foundation for the Promotion of Industrial Innovation, Castilla-La Mancha University and the European Social Fund.







# GIS Course.com

 (+34) 910 325 482

 [training@tycgis.com](mailto:training@tycgis.com)

Calle Fuencarral 158,  
Entreplanta, Oficina 16-17  
28010 Madrid

TYC GIS MÁLAGA  
Avda. Pintor Joaquin Sorolla 137, 1º D  
29017 MÁLAGA

---

TYC GIS MÉXICO  
Tequesquitengo 4, Fracc. Cuaunáhuac  
C.P. 62450,  
Cuernavaca, Morelos.

TYC GIS PANAMÁ  
Calle Eusebio A. Morales  
El Cangrejo  
PH Neo Plaza Oficina 2015